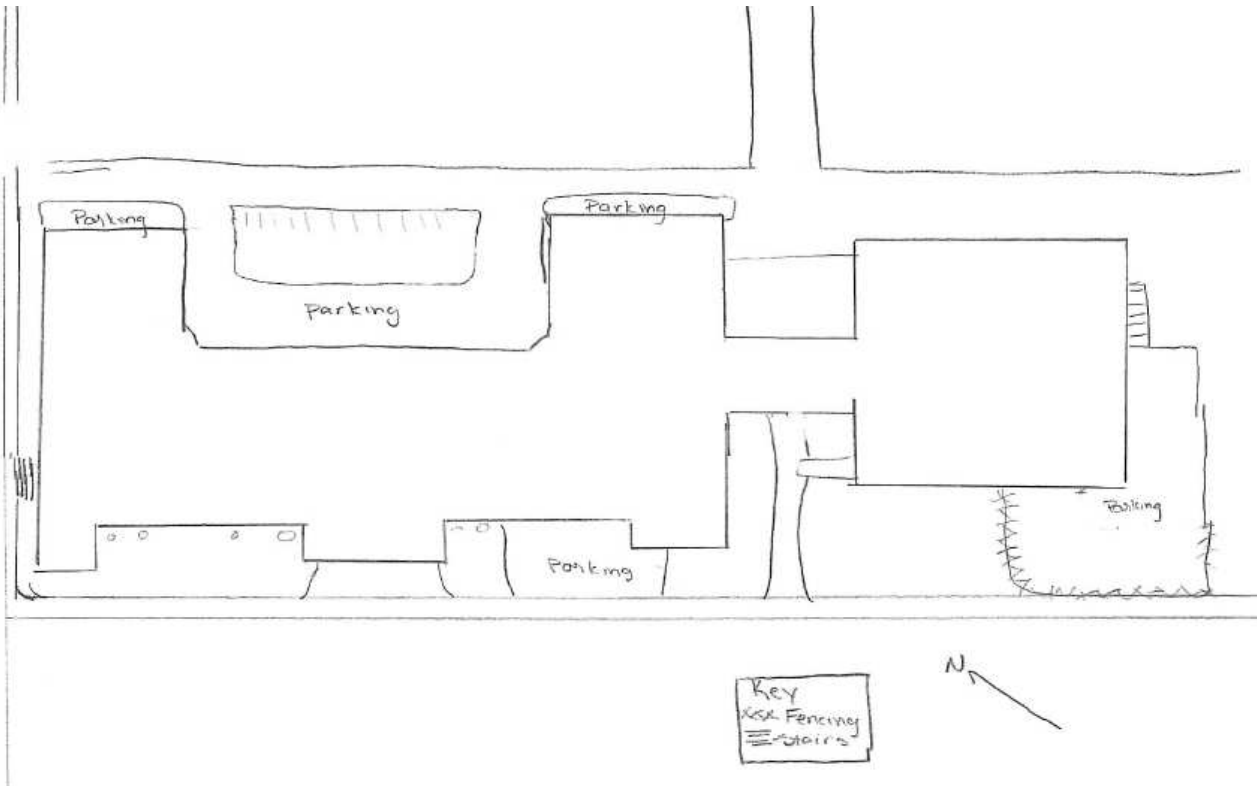
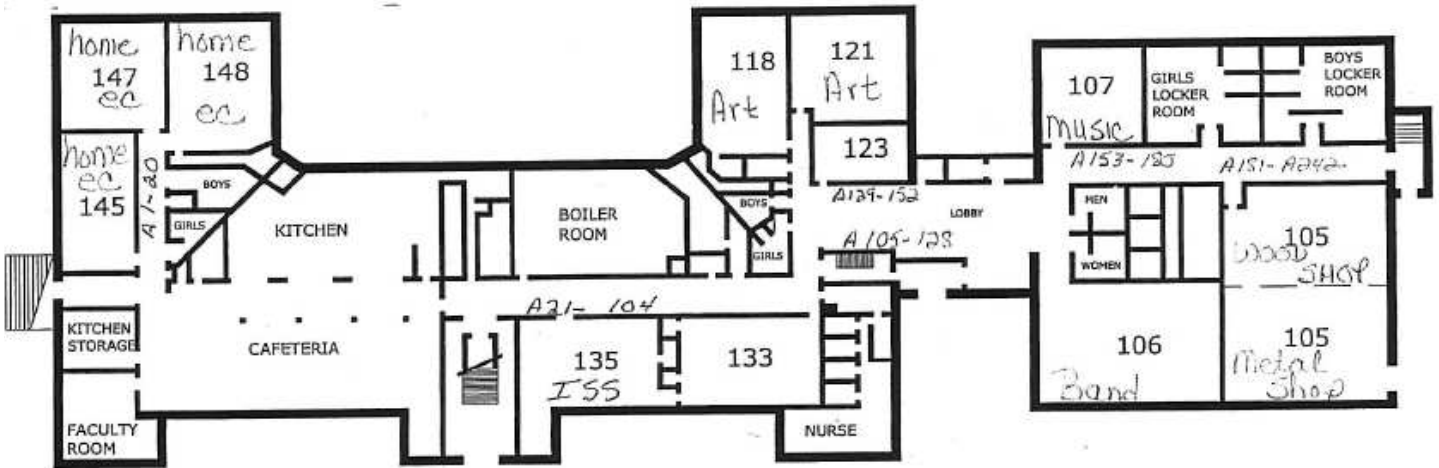


150044 – Kittanning Area Middle School





Site Plan of Kittanning Middle School



N. MCKEAN STREET
FIRST FLOOR

Floor Plan of Kittanning Middle School

150044; Kittanning Area Middle School. This school is located on North McKean Street, Kittanning, Pennsylvania in Kittanning Borough, Armstrong County. It is part of the Armstrong School District. The 1919 school building and a connected 1985 addition are located on an urban block bounded by McKean Street, Vine Street, Arch Street and an alley, S. McKean Way. The 1919 section is located at the northern end of the block. The 1985 section is located on the southern end of the block, partially covering an unnamed alley, remnants of which is visible in the basement. Municipal sidewalks and narrow strips of lawn separate the school from the roadway on the northwest and southwest sides. A small parking lot is located on the southwest side of the school, abutting the school. Paved parking areas are located on the northeast side of the school, between the school and S. McKean Way. Southeast of the 1919 building is a 1985 addition that replaced an earlier separate school building that had been connected to the 1919 structure by a third-floor hallway above an open alley. Parking is located around the southern corner of the addition. Landscaping and trees are scattered around the small grassy areas on the property.

The 1919 Classical Revival school is roughly a U-plan arranged along three stories of U-shaped interior hallways lined on either side by classrooms. A cafeteria and kitchen at the northwest end of the first floor are the only large spaces in this building. The main entrance is centered on the façade. The 1985 square-shaped addition houses a multi-purpose room, shops, and music rooms. A library on the third floor straddles the east corner of the 1919 building and the northeast end of the connector section between the old and new buildings. Brick and cast stone details embellish the 1919 building's northwest and southwest exterior walls, including pilasters between window bays. The 1919 brick building sits on a cast stone foundation. Rubber membrane covers the flat roof. The building has a brick interior chimney. The roof was formerly hipped and covered with terracotta tiles. The main entrance contains one set of aluminum-frame and glass double doors with sidelights and transom windows replaced in 1987. The entrance is set into a shallow projection with a multi-story arch flanked by paired pilasters. The building is lit by modern single-hung windows. Part of each window bay is closed with a solid panel. The 1985 addition is brick-clad with brick details that mimic the 1919 structure, such as simple brick pilasters.

The main entry leads to an enclosed vestibule featuring ceramic floor tiles, stone veneer walls, a plaster ceiling with a hanging light fixture, and a wood frame glass interior wall/entry with leaded glass transoms. The vestibule leads to a main staircase accessing the main level on the second floor. The hallways feature terrazzo floor tiles, acoustic ceiling tiles, plaster walls, and fluorescent lights. The cafeteria features terrazzo floor tiles, a dropped ceiling with acoustic tiles, plaster walls, fluorescent lights, and a kitchen open to the cafeteria through tiled columns. A combination multi-purpose room located in the 1985 addition features a newly replaced wood floor, wood rollaway bleachers, concrete-block walls, fluorescent lights hanging from a metal ceiling truss, and suspended basketball hoops. A proscenium stage is located at the northeast end of the room. Specialized classrooms include, or have included, home economics, art rooms, a TV studio, music and band/choral rooms, and wood and metal shops.

Built as a senior high school in 1919 called Central School, the school was eventually connected to a neighboring elementary school via a third-story hallway. The two schools changed over time to junior high and elementary schools. The last of three destructive fires destroyed the southern school building on the block in 1985. Armstrong School District decided to replace the lost building in a construction project that created one continuous school structure. The new addition, opened in 1986, contained a multi-use room instead of a separate gymnasium and auditorium as formerly existed in the lost school building. The name of the school changed over time. The school is currently known as the Kittanning Area Middle School.

United States Department of Agriculture

- 1939 Aerial Photograph ASJ-53-20. Created on May 2, 1939. On file at the Pennsylvania State Archives, Record Group 31, Records of the Department of Commerce, State Planning Board Collection.

United States Geological Survey

- 2000 *Kittanning, PA Quadrangle*. 7.5 minute series. Derived from imagery taken 1991 and other sources. Photoinspected using imagery taken 1998. Survey control current as of 1992. Boundaries, other than corporate, verified 2000. Denver, CO.
- 1994 *Kittanning NE, PA Aerial Photograph*. USGS Reference Number 40079-G5-02-PHT. Created on April 21, 1994.



Aerial View of Kittanning Middle School

More Photos of Kittanning Area Middle School

